

PENDINO PIEGA G

Product description:

Element is made of galvanized steel wire, diameter 4.00 mm. Used to hang drywall or cassette design to lower the ceilings. Bended eyelet forms one side and is used for attachment to the solid construction of buildings. Quickhanger or butterfly spring can be mounted on the straight end.



Range of usage:

The product is used for fixing the drywall elements into solid structures of buildings. It is used to reduce the ceiling in plasterboard or cassette structures.

Characteristics:

Material	Drawn wire
Coating	Zinc – min Z100 (EN 10327)
Thickness	4.00 mm (EN 10143)
Reaction to fire	Class A1(EN 14195)
Durability	Class B
Hazardous substance	NPD

Product variability:

Code	Name	Load	Pack	Weight
BSU1411G	Wire with bended eyelet - 0125 mm	0,50 kN	100 pcs	0,0163 kg
BSU1401G	Wire with bended eyelet - 0250 mm	0,50 kN	100 pcs	0,0279 kg
BSU1409G	Wire with bended eyelet - 0375 mm	0,50 kN	100 pcs	0,0395 kg
BSU1402G	Wire with bended eyelet - 0500 mm	0,50 kN	100 pcs	0,0512 kg
BSU1403G	Wire with bended eyelet - 0750 mm	0,50 kN	100 pcs	0,0745 kg
BSU1404G	Wire with bended eyelet - 1000 mm	0,50 kN	100 pcs	0,0978 kg
BSU1405G	Wire with bended eyelet - 1500 mm	0,50 kN	100 pcs	0,1443 kg
BSU1406G	Wire with bended eyelet - 2000 mm	0,50 kN	100 pcs	0,1909 kg

Real weight may vary in range of +/-5% according to EN10143

Mounting:

Mount the wire to the ceiling using nail plug or ceiling anchor. Another possibility is to attach the wire to the beam clamp, which is attached to a steel girder. Put a flat side to the double spring clip or single clip which is part of the product intended for subsequent hanging profile which allows quick and easy leveling construction.



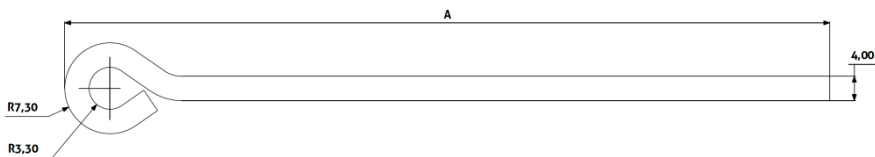
Packaging:

The wires with the length of 125 mm are packed by 100 pcs in carton box. Longer variations are packed by 100 pcs with cable tie. Every dimension is labeled with identification tag.

Recommended storage:

The product is required to store in dry and temperate environment in order to prevent condensation on the surface of the product and damage to the packaging.

Technical drawing:



Code	Product	Weight	A
BSU1411G	Wire with bended eyelet – 0125 mm	0,0163 kg	125 mm
BSU1401G	Wire with bended eyelet – 0250 mm	0,0279 kg	250 mm
BSU1409G	Wire with bended eyelet – 0375 mm	0,0395 kg	375 mm
BSU1402G	Wire with bended eyelet – 0500 mm	0,0512 kg	500 mm
BSU1403G	Wire with bended eyelet – 0750 mm	0,0745 kg	750 mm
BSU1404G	Wire with bended eyelet – 1000 mm	0,0978 kg	1000 mm
BSU1405G	Wire with bended eyelet – 1500 mm	0,1443 kg	1500 mm
BSU1406G	Wire with bended eyelet – 2000 mm	0,1909 kg	2000 mm